

Mt Gravatt Environment Group

Bringing birds and butterflies back to suburbia.

Strategic Vision

- Mountain heart of our community
- Ecological and cultural landmark
- Strong Indigenous and European links
- Amazing plant and animal diversity
- Ten minutes from CBD

Actively engage whole community in consolidating healthy habitat areas and reducing habitat isolation with wildlife links.

In July 1893 ... in recognition of the resolve of the settlers ... 'Mt Gravatt Mountain Recreational Reserve' [was established by the State Government].



MT GRAVATT THEN AND NOW – Vol 1

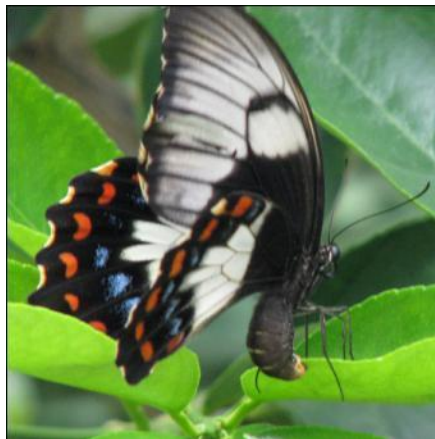


Mt Gravatt Environment Group

Bringing birds and butterflies back to suburbia.

Objectives

- Restoration and long term security of a unique flora and fauna sanctuary.
- Community education focused on stewardship of our unique Reserve.
 - Diversity of native flora and fauna in the middle of our urban community.
 - Damage caused by careless “I don’t own it so I can rubbish it” attitudes.
- Building long-term partnerships with Mountain stakeholders.



Mt Gravatt Reserve

A 66 hectare bushland experience just 10km from Brisbane CBD

Environmental Significance

- Unique flora and fauna diversity from unique geological influences
 - 254 native plant species – 10% of species diversity of United Kingdom 32million hectares
 - 45 butterfly species
 - Koala, Echidna, Squirrel & Sugar Gliders, Eastern Whipbird, Eastern Bearded Dragon
- Quartzite from Neranleigh-Fernvale seabeds - 290 – 240 million years old
 - Rock pools, ephemeral waterlines, steep gullies and subtle changes in soil type
 - Dry sclerophyll forest (typical) - less dense canopy and sparse shrub/grass understorey
 - Wet eucalypt forest (patches) - taller open forest – well developed understorey
 - some rainforest species such as ferns/shrubs
 - Very different to sandstone and associated heath plants of nearby Toohey Forest

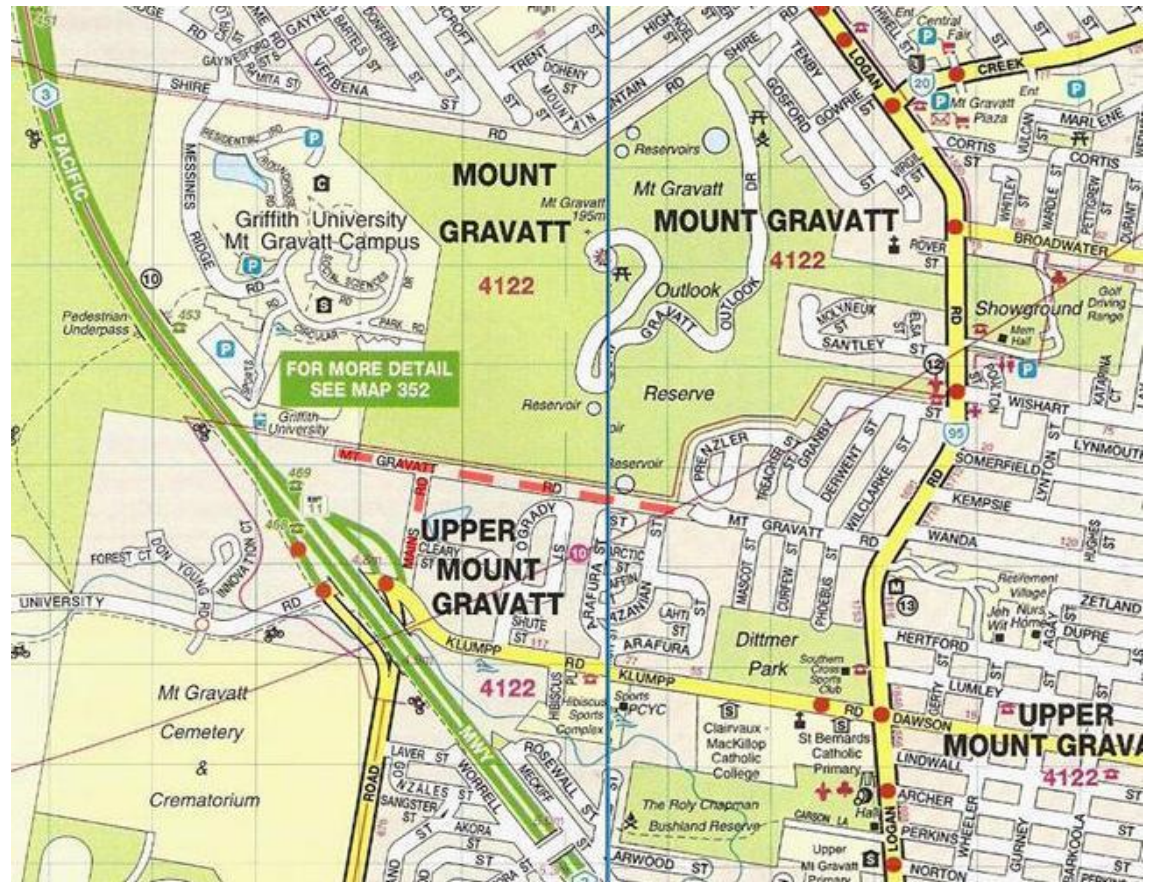


Mt Gravatt Reserve

A 66 hectare bushland experience just 10km from Brisbane CBD

Complex Ownership

- Qld Government
 - BCC in Trust
- First Contact
- Road reserves
 - Shire, Mt Gravatt & Mains Rds
- Urban Utilities
- Electricity easement
- Telstra
- Griffith University
- “Unmanaged” bushland
 - GU, Shire Rd reserve & m/way
- Poultry farm (private)
 - South-western boundary



Mt Gravatt Reserve

A 66 hectare bushland experience just 10km from Brisbane CBD

Recreational Reserve 1893

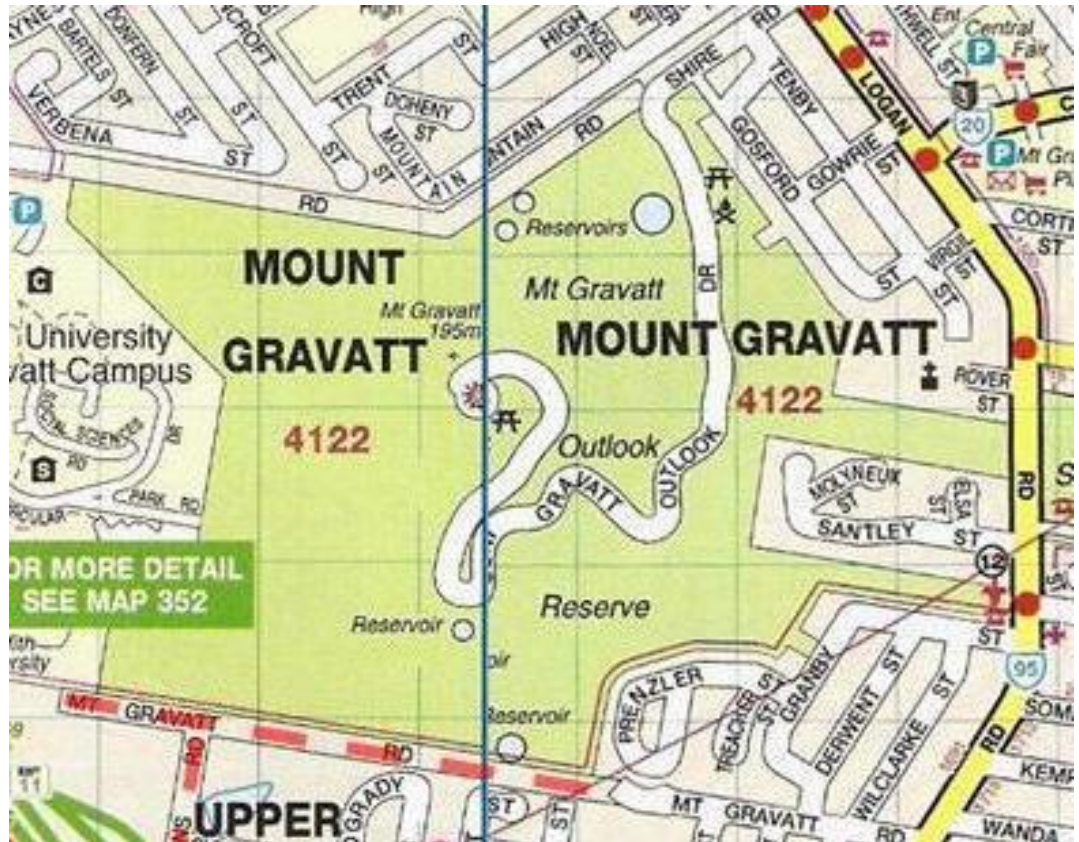
- Ex-railway timber reserve

Reserve in Trust

- Qld Government Land Act 1994
- Held in trust by BCC
- Designated Purpose - Recreation

BCC recognises primary activities

- Conservation
- Recreation
 - sustainable nature-based
- Tourism



Mt Gravatt Reserve

Threats

Weeds/Garden Waste/Dumping

- Weeds – Creeping Lantana, Umbrella Tree, Chinese Elm, Singapore Daisy, Fishbone Fern
- Garden waste dumping – spreads garden plants displacing native vegetation
- Dumping household rubbish – old furniture, piano, car parts



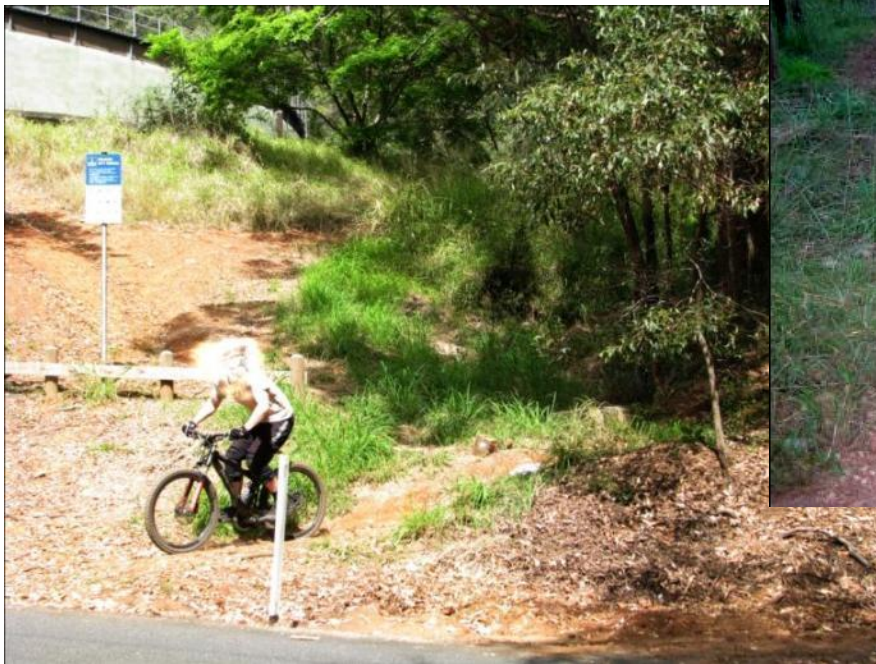
A 66 hectare bushland experience just 10km from Brisbane CBD

Mt Gravatt Reserve

Threats

Downhill Mountain Biking, Trail Bikes & Unofficial Tracks

- Erosion, disturbing restoration work
- Safety risk for walkers
- Public liability risk for BCC



A 66 hectare bushland experience just 10km from Brisbane CBD

Mt Gravatt Reserve

Threats

Feral and Domestic Animals

- Foxes – raiding unsecured compost bins
- Dogs off leash and waste not picked-up



Smell of dog waste and territory marking keeps koalas away.



A 66 hectare bushland experience just 10km from Brisbane CBD

Mt Gravatt Environment Group

Habitat Consolidation and Linking



Gertrude Petty Place – est. 2005

- Community volunteers
- Weekly and monthly working bees
- Over 2,000 hours contribution to date
- Rubbish dumping, mountain bikes, dogs



Rover Street Bushcare – est. 2005

- GCCC Rangers 2005
- Community volunteers 2009
- Monthly working bees
- Garden waste, unofficial tracks



Bringing birds and butterflies back to suburbia.

Mt Gravatt Environment Group

Habitat Consolidation and Linking



Roly Chapman Reserve – est. 2005

- Lion's Club & community members
- Group leader recently retired
- Turtles and native fish
- Rubbish dumping, dogs



Fox Gully Bushcare – est. 2007

- Community and corporate volunteers
- Over 2,600 volunteer hours contribution to date
- Yearly planting – over 2,000 grasses, vines, trees
- Wednesday Afternoon Bushcare
- Garden waste, rubbish



Bringing birds and butterflies back to suburbia.

Mt Gravatt Reserve

MEG Supported by:



*Dedicated to a
better Brisbane*



**Jaeger-Moran
Environmental**

Griffith University
EcoCentre



Bringing birds and butterflies back to suburbia.

Mt Gravatt Environment Group

Bringing birds and butterflies back to suburbia.

Short Term Goals

- Restoration of key buffer areas – property boundaries and picnic areas
 - Natural regeneration – removal and monitoring of weeds
 - Severe degradation – rubbish removal, weed control and native species planting
- Wildlife habitat restoration
 - butterfly planting and native bee hives at Gertrude Petty
 - Koalas and Gliders returning to Rover Street Bushcare
 - wildlife corridor restoration : 14 properties in Fox Gully
 - Mimosa Creek Precinct Landscape Plan
- Public education

Change “I don’t own it so I can rubbish it” culture

 - Fox Gully Updates and Southside Community News
 - Internet – megoutlook/foxgully and Twitter
 - Presentations to community groups and schools



Mt Gravatt Environment Group

Bringing birds and butterflies back to suburbia.

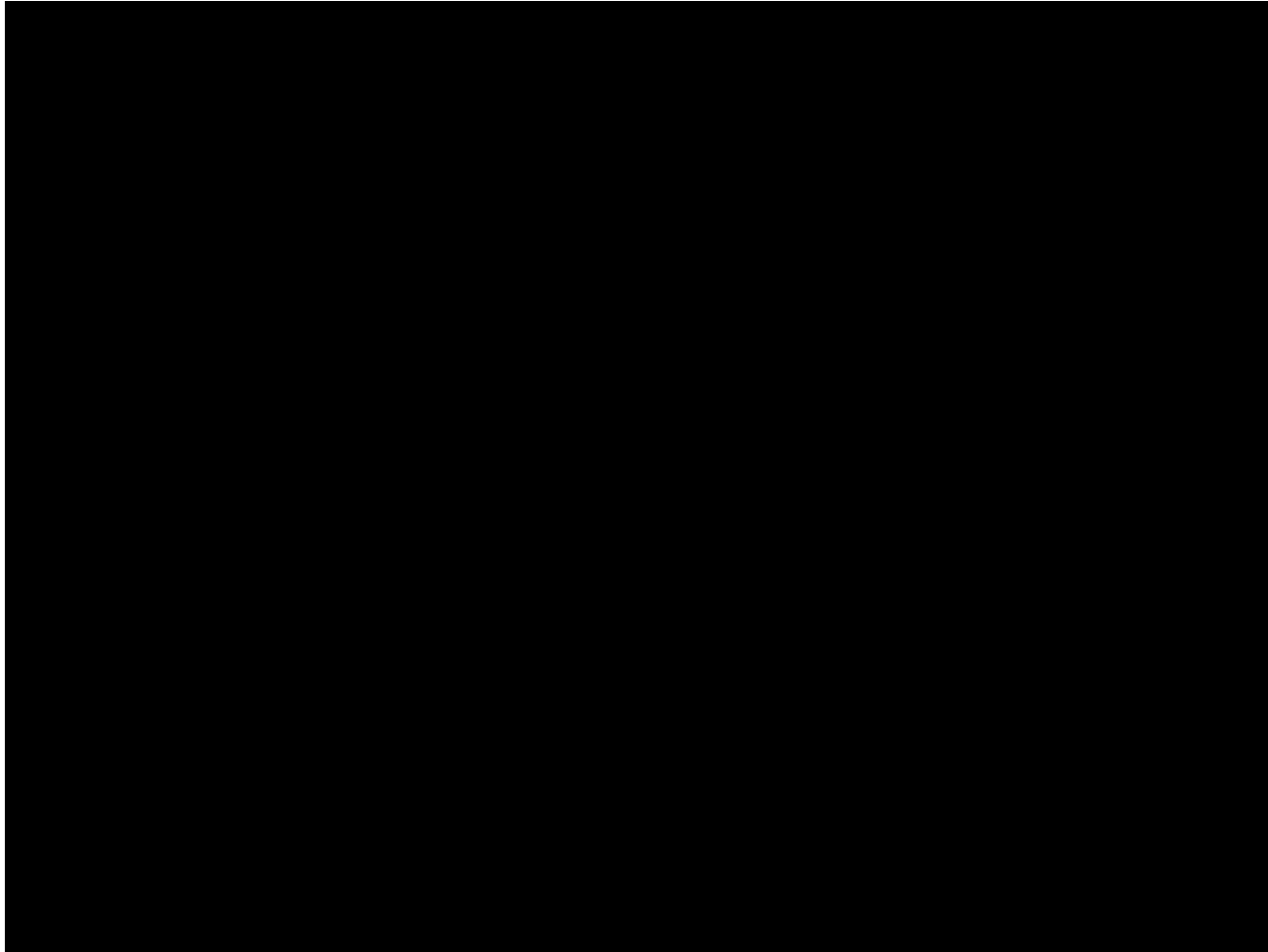
Long Term Goals

- Habitat consolidation and linking providing long term security for Reserve
 - Landscape Plans: Mimosa Creek Precinct/Showgrounds Precinct/Summit Precinct
 - Engagement of government, private, schools, university property owners
 - Environmental investments delivering excellent community and business outcomes
- Strong community partnerships – share knowledge and combine effort
 - First Contact – youth employment programs and indigenous history
 - Mt Gravatt Historical Society – history of community relationships with Reserve
 - BCC Habitat Brisbane – resources, expertise, co-ordination of stakeholder activity
 - Mens Shed – nest boxes, environmental/historical display Rover Street



Mt Gravatt Environment Group

Bringing birds and butterflies back to suburbia.



Mt Gravatt Environment Group

Bringing birds and butterflies back to suburbia.

- Our unique flora and fauna is worth protecting.
- Building stewardship of our unique Reserve will create positive change.
- Strong partnerships create strong communities.

Information about MEG – www.megoutlook.wordpress.com



@megoutlook

