

Love Flower *Pultenaea villosa*



Leafwing Butterfly
Doleschallia bisaltide

Love Flower is a delicate native herb and food plant for caterpillars of the Leafwing and Varied Eggfly butterflies. So when you see a caterpillar covered in shiny black barbed wire and eating your Love Flower, be patient because you will soon have a Leafwing butterfly.

Eastern Bearded Dragons *Pogona barbata* like to snack on the flowers.



Red Kennedy Pea, Running Postman *Kennedia rubicunda*



Long-tailed Pea-blue
Lampides boeticus

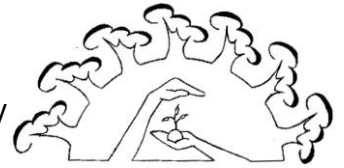
Red Kennedy Pea or Running Postman is an attractive fast growing native vine. Caterpillar food plant for Long-tailed Pea-blue butterflies.



Wombat Berry *Eustrephus latifolius*



Attractive fringed white flowers tinged with pale pink, Wombat Berry is moderately fast growing but not excessively vigorous so it is not likely to smother other plants.



Mt Gravatt Environment Group



The orange berries provide an attractive display in winter bringing fruit eating birds to your garden and, as the name suggests, you might even find a Wombat digging in your garden looking for the tuberous roots.

Arrow-leaved Violet *Viola betonicifolia*



Mt Gravatt Environment Group



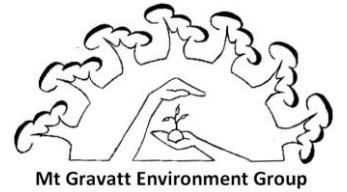
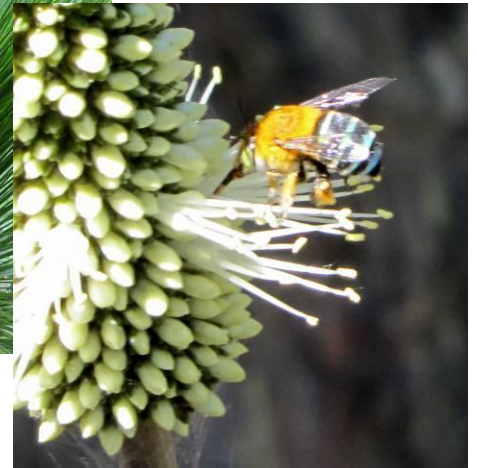
Australian Fritillary *Argyreus hyperbius*

A pretty clumping plant that spreads easily and the Arrow-leaved Violet is the only food plant for caterpillars of the endangered Australian (Laced) Fritillary butterfly. Historical distribution of the Australian Fritillary from Gympie to Port Macquarie (NSW) is now down to one confirmed population in northern NSW.

Grass Tree *Xanthorrhoea johnsonii*

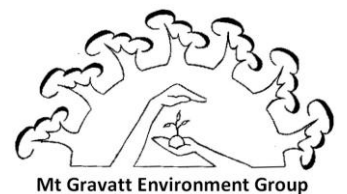


Blue Banded Bee
Amegilla cingulata



Grass Trees *Xanthorrhoea johnsonii* are common in Toohy Forest while only the less common Bottle Brush Grass *Xanthorrhoea Macronema* (Blue Banded Bee photo) grows in Mt Gravatt Reserve. Both Grass Trees are very popular with both native bees like Sugar Bag and Blue Banded Bees, and common European Honey Bee *Apis mellifera*.

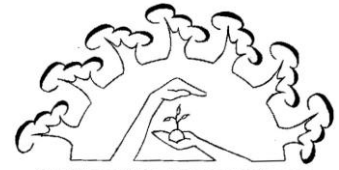
Richmond Birdwing Butterfly Vine *Pararistolochia praevenosa*



**Richmond Birdwing
Butterfly *Ornithoptera
richmondia***

Richmond Birdwing Butterflies, one of the largest butterflies found in South East Queensland, were once found in great numbers from the Mary River in Queensland to the Clarence River in NSW and west to the Great Dividing Range. Since the 1900s the range of the butterfly has been severely restricted. Now Brisbane no longer has a stable population, although sightings have become more frequent in wet years as a result of the planting of Richmond Birdwing Vines over the past two decades.

Bower Vine *Pandorea jasminoides*

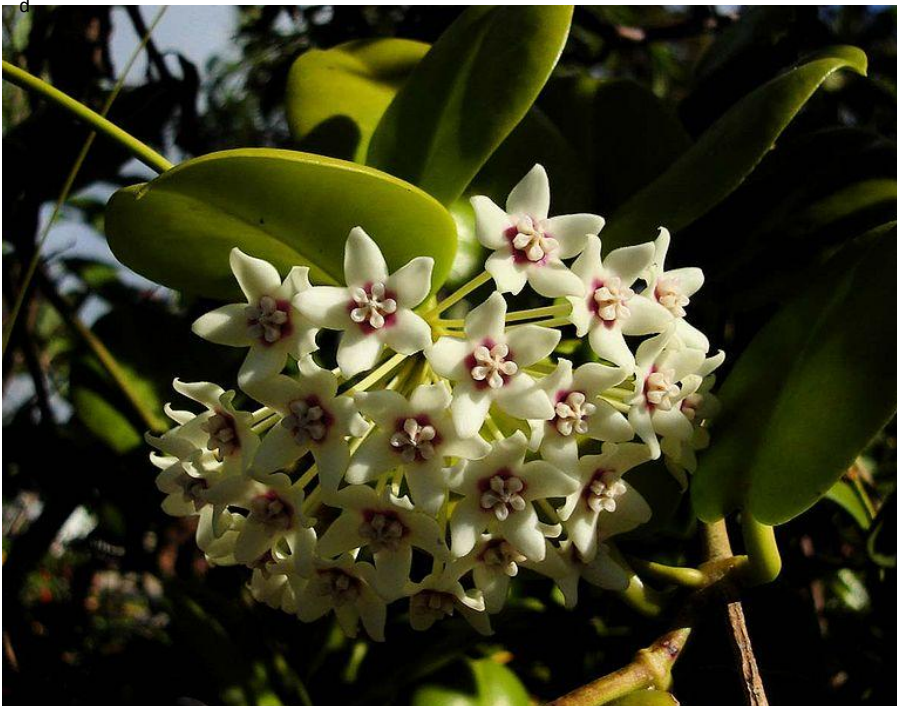


Mt Gravatt Environment Group

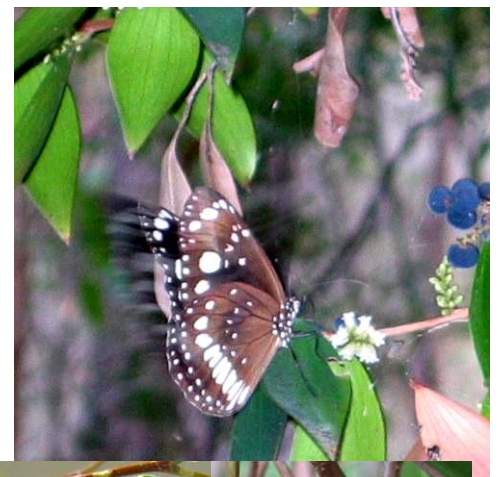
L Also called Bower of Beauty, Pandorea is a vigorous twining plant with large trumpet like flowers: usually pale pink with a deep pink throat and about 35 mm long. Flowering occurs over a long period between spring and late summer.

Good for growing on trellises beside walkways or providing shade and wind shelter for barbeque areas.

Waxflower Vine *Hoya australis*



Mt Gravatt Environment Group



Common Crow Butterfly

Euploea core

Waxflower Vine, a rainforest vine that will grow in sun or semi-shade. Waxy bundles of fragrant white/pink flowers in spring. Food plant for the curious caterpillars of Common Crow butterflies. They may strip the leaves but you are rewarded with striking silver/black chrysalis which then metamorphose into large black and white butterflies.



Sea Rush *Juncus kraussii*



Eastern Dwarf Tree Frog
Litoria fallax

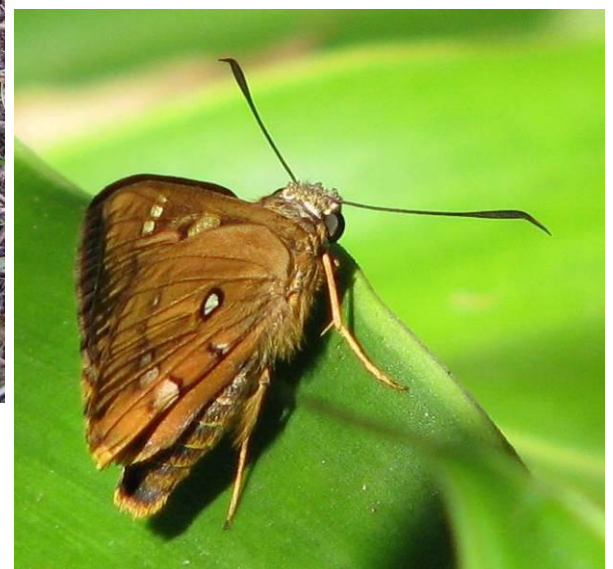
Sea Rush loves wet swampy ground so it is excellent for planting in wet patches in your backyard to soak up excess water and create habitat for frogs.



Creek Mat-rush, Green Mat-rush *Lomandra hystrix*



Creek Mat-rush likes damp ground and is used for erosion control in restoration of creek/gully habitats. Caterpillar food plant for Splendid Ochre/Symmomus Skipper and Brown Ochre butterflies.



Splendid Ochre *Trapezites symmoma*

Looks like a moth? Butterflies (normally) rest with wings up and together, moths rest with wings flat.

