

Fox Gully Restoration Update

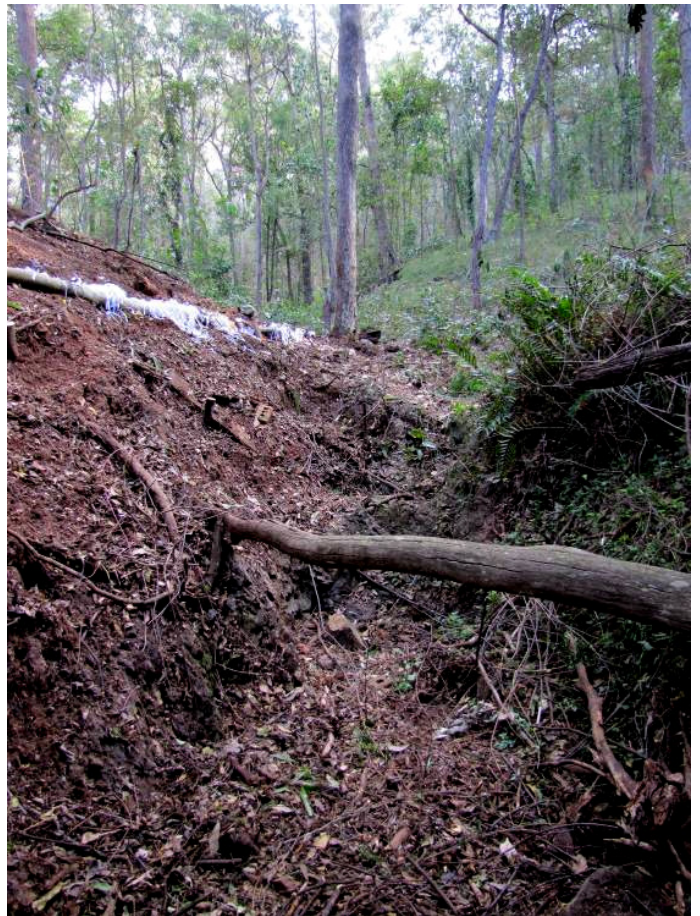
August 2010

Replanting progressive total – 1,586 grasses, vines, herbs, shrubs and trees

www.foxgully.wordpress.com



The last Purple Succulent has been removed from the gully thanks to Roger and Margaret (50 O'Grady St). Restoration of Zone 8 was started by the ANZ team in November 2008. Since then over ten cubic metres (a large tip truck) of weeds have been removed. The picture on the left shows the remaining area of Purple Succulent before clearing. After clearing (below) the extent of weed invasion can be appreciated by considering the bare earth and scattering of native ferns that are all that remain.



Margaret and Roger filling tubs with Purple Succulent ready to be carried up the slope to the compost pile. Hard work but composting on-site means we significantly reduce the work involved in restoration while keeping valuable nutrients available for replanting.

Also removed were Ochna, Cadaghi *Corymbia torrelliana*, Chinese Elm and a large number of Easter Cassia covered in seed pods.

Safety is a key concern in our bushcare work. This part of the gully is quite steep and Roger had to work very carefully to clear the weeds. So, in preparation for our next planting in October, Margaret helped me rope off and clearly mark the edge.

Logs installed across the slope will minimise erosion while the soil is stripped bare. Paper shredder waste covered with compost from past restoration work will retain rainwater and control weeds. Plants to be restored to the gully include the Coin-spot Treeferns that used to be here, as well as, butterfly trees like the Hairy-leaved Lillybush: larval food plant for Blue Triangle.



BCC Grant for Fox Gully Bushcare

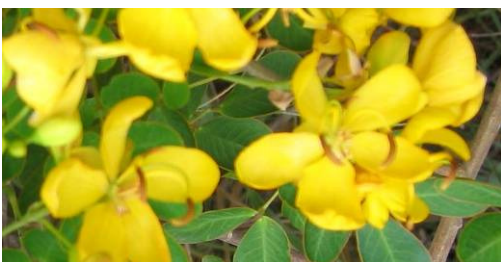
Fox Gully Bushcare has received a BCC Environmental grant to support our community education activities. The grant will allow for the publication and wider distribution of these Updates, as well as an environmental workshop aimed at building wider community awareness of the diversity plant and animal life in our forest.

Flora & Fauna of Mt Gravatt Reserve currently lists 248 different native plant species: plant diversity in our 66ha forest equals 10% of the plant diversity in the whole 22.6million hectares of Great Britain. We also have 39 different butterfly species including these uncommon Tailed Emperor butterflies photographed near Mt Gravatt Campus last week.



Tailed Emperor *Polyura sempronius*

WEED ALERT!



The bright yellow Easter Cassia are highly visible around April (Easter) each year when we commonly see them lining the banks of creeks around the city. Now is a good time to remove this invasive weed. The shrubs are currently covered in seed pods which wash into storm water drains, ending up in our creeks and force out native vegetation.



Fox Gully Bushcare

supported by

MEG
Mt Gravatt
Environment Group

FWR Group
Pty Ltd

Banksia
coaching international

ANZ

Officeworks
www.officeworks.com.au

Southside
Sport & Community Club Inc

Dedicated to a better Brisbane