

# Fox Gully Restoration Update

January 2010

Replanting progressive total – **1,586** grasses, vines, herbs, shrubs and trees

**Welcome to Fox Gully Bushcare** – [www.foxgully.wordpress.com](http://www.foxgully.wordpress.com)

## Koalas & Butterflies back in Fox Gully

Bushland restoration is already having a visible impact on the abundance of wildlife in Fox Gully.

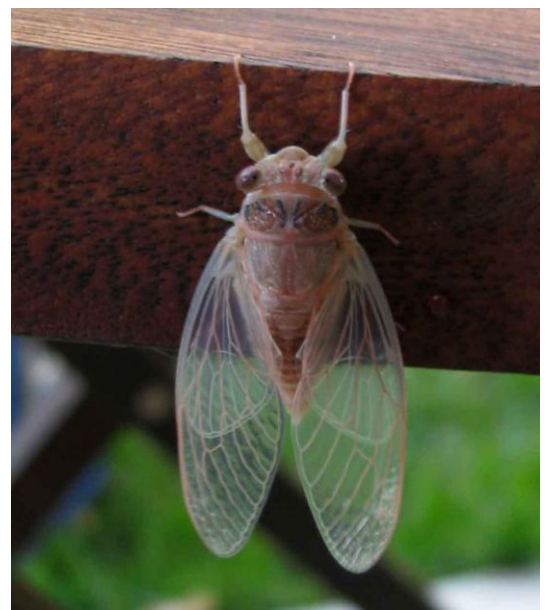
Work by the ANZ Fox Gully Team has resulted in the second Koala sighting in the gully. This male Koala was photographed last week in a Tallowwood preserved on the property of Jason and Tash Olson-Seeto. Another Koala was photographed behind Sam Bilton's house in November. The ANZ Team have removed over eight cubic metres of the invasive weed Purple Succulent allowing free movement of Koalas down this wildlife corridor.



Yesterday I found this cicada, a Black Tree-ticker, while clearing weeds in Zone 15. The cicada had just shed its old shell ready to grow a new larger shell.

I estimate this photo was taken fifteen minutes after it had shed its old shell. The wings are still wet and folded. Eleven minutes later the wings are dry and the cicada is moving around freely. However its new shell is not yet dry and its colour is still pinkish not the rich brown that will develop.

Our Korean Homestay student, Cindy (Suhyeon) helped me identify this cicada as a *Birrima varians* - Black Tree-ticker by examining the embryonic body markings and vein pattern in wings.





This morning there were between ten and twenty Imperial Hairstreak butterflies - *Jalmenus evagoras*, flying among the Acacias in Zone 7.

Zone 7 was cleared of building rubbish and weeds then replanted with Brisbane Fringed Wattle and Black Wattle in October 2008.

Acacias are the larval food plant for the Imperial Hairstreak, so now, just sixteen months later our planting is supporting a thriving Imperial Hairstreak population. I was even able to capture two butterflies mating.



## **BUSHFIRE WEED ALERT!**

Guinea Grass *Panicum maximum* is flowering and spreading seeds at the moment. Guinea Grass is high bushfire risk because it grows to two or three metres and accumulates a lot of dead dry grass underneath.



## **Fox Gully Bushcare**

supported by

**MEG**  
Mt Gravatt  
Environment Group



Dedicated to a  
better Brisbane

**FOUR WALLS**  
AND A ROOF  
Sustainable Education Sales and Services

**ANZ**  
[www.anz.com.au](http://www.anz.com.au)

**Banksia**  
coaching international

**Officeworks**  
[www.officeworks.com.au](http://www.officeworks.com.au)