

Native Bees of Mt Gravatt Conservation Reserve

Compiled by Michael Fox

<https://megoutlook.org/flora-fauna/native-bees/>

© 2014-17 Creative Commons – free use with attribution to Mt Gravatt Environment Group

Anthophoridae
Amegilla bombiformis
Teddy Bear Bee

Macro photography: Alan Moore

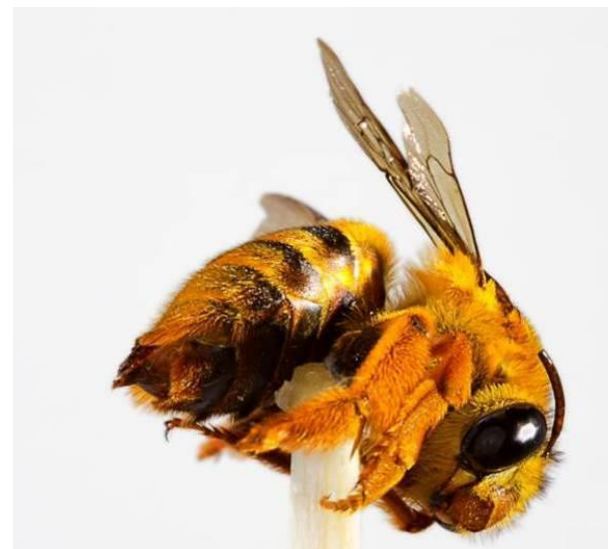
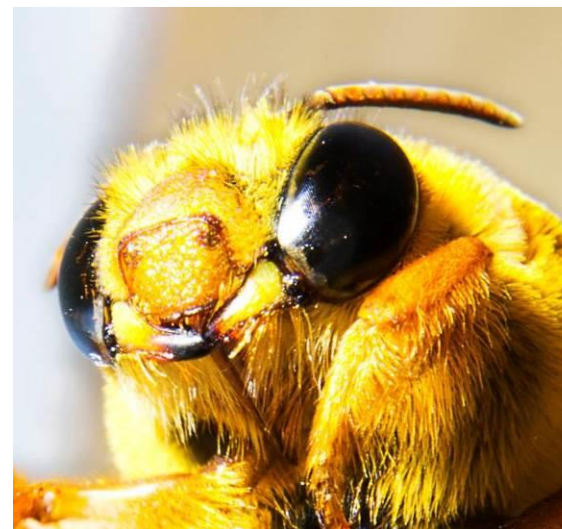
Solitary bees. Females make nest
in creek banks.



Look close – “I have claws.”

Teddy Bear bees can perform
Buzz Pollination (sonication) –
important for vegetable crops like
tomatoes. When they land on a
flower they disengage their wings
and use the powerful muscles to
shake pollen out of the flowers.
European Honey bees cannot

Looks similar to overseas Bumble
Bees.



Native Bees of Mt Gravatt Conservation Reserve

Anthophoridae
Amegilla cingulata

Blue Banded Bee

Macro photography: Alan Moore

Native solitary bees with a feeding range of approximately 300metres. Females lay eggs in burrow in earth bank ready to hatch in Spring.

Blue Banded bees can perform Buzz Pollination important for vegetable crops like tomatoes. When they land on a flower they disengage their wings and use the powerful muscles to shake pollen out of the flowers. European Honey bees cannot perform Buzz Pollination.

Video available



Bee Hotel for Blue Banded and Teddy Bear bees.



Native Bees of Mt Gravatt Conservation Reserve

Anthophoridae
Thyreus sp.
Cuckoo Bee

Lays eggs in nest of Blue-banded Bee. Cuckoo Bee larvae feed on the food stored by Blue-banded Bee.



Anthophoridae
Xylocopa sp.
Great Carpenter Bee

24mm



Native Bees of Mt Gravatt Conservation Reserve

Anthophoridae
Xylocopa (Lestis) aeratus
Green Carpenter Bee

20mm



Anthophoridae
Xylocopa (Lestis) bombylans
Metallic Carpenter Bee

20mm



Native Bees of Mt Gravatt Conservation Reserve

Apidae
Tetragonula sp.
Stingless Native Bee

Australia has fourteen varieties of stingless native bees.

Video available



Hive of stingless native bees.



Backyard hive



Native Bees of Mt Gravatt Conservation Reserve

Apidae
Thyreus lugubris
Domino Coukoo Bee

10-13mm

Video available



Halictidae
Homalictus sp.
Small Metallic-green Bee



Native Bees of Mt Gravatt Conservation Reserve

Megachilidae *Megachile* sp. Leafcutter Bee

Female building nest for eggs. The bee cuts circular pieces out of leaves which are then shaped into a tube for the eggs and food for the larva. Leafcutters are solitary bees not living in colonies like honey bees.

Video available



Native Bees of Mt Gravatt Conservation Reserve