

Moths of Mt Gravatt Conservation Reserve

Compiled by Michael Fox

www.megoutlook.wordpress.com/flora-fauna/butterflies/

© 2014-21 Creative Commons – free use with attribution to Mt Gravatt Environment Group

Aganaidae
Agape chloropyga
Yellow Tiger Moth

Wingspan:
Male 60mm Female 60mm

Caterpillar food plants:
Fig tree *Ficus sp.* – not in Reserve



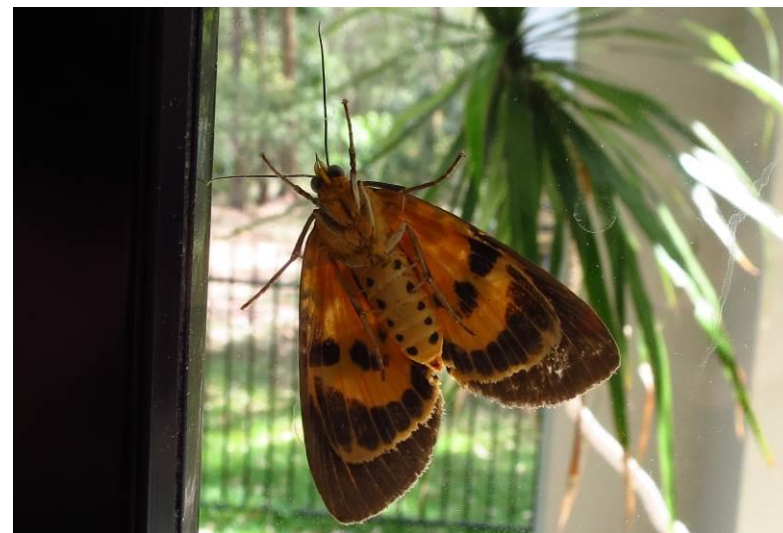
Bright yellow proboscises
(feeding tube)



Aganaidae
Asota plagiata
Two-spots Tiger Moth

Wingspan:
Male 50mm Female 50mm

Caterpillar food plants:
Fig tree *Ficus sp.* – not found in Reserve



Moths of Mt Gravatt Conservation Reserve



Moths of Mt Gravatt Conservation Reserve

Anthelidae

Anthela canescens

Large Anthelid Moth, Western
Anthelid

Wingspan:

Male 50mm Female 70mm

Similar to: Common Anthelid Moth

Anthela acuta

Common Anthelid does not have the
distinctive tips on wings.

Plumose antennae hairs of male
moths act as chemoreceptors and
enable them to detect pheromones
given off by females. The hairs on
each antenna significantly increase
the receptive surface area so that
even the most minute chemical
changes in the environment can be
detected.

www.bugs.bio.usyd.edu.au



Moths of Mt Gravatt Conservation Reserve

Anthelidae
Anthela canescens
Large Anthelid Moth, Western
Anthelid

Caterpillar 60mm
Specimen: Liam Morris

Two distinctive black tufts behind head.

Three pairs of legs at front (thorax)
become moth legs.

Prolegs on abdomen used for
gripping.

Clusters of black spine like hairs are
non-venomating. Hairs are stiff and
fragile breaking off in skin causing
irritation.



Moths of Mt Gravatt Conservation Reserve

Anthelidae
Anthela varia
Hairy Mary

Wingspan:
Female 90mm

Caterpillar food:
Eucalyptus



Arctiidae
Amata nigriceps
White Antenna Wasp Moth

Wingspan:
Male 30mm Female 30mm

White tips on end of antenna.



Moths of Mt Gravatt Conservation Reserve

Arctiidae
Amata trigonophora
Tiger Moth

Wingspan:
Male 40mm Female 40mm



Arctiidae
Asura lydi
Lydia Lichen Moth

Caterpillar food: Lichens

Lichen moth caterpillars are typically dark coloured with clumps of black setae (spiny hairs) often with tufts on the back of the larva.



Moths of Mt Gravatt Conservation Reserve

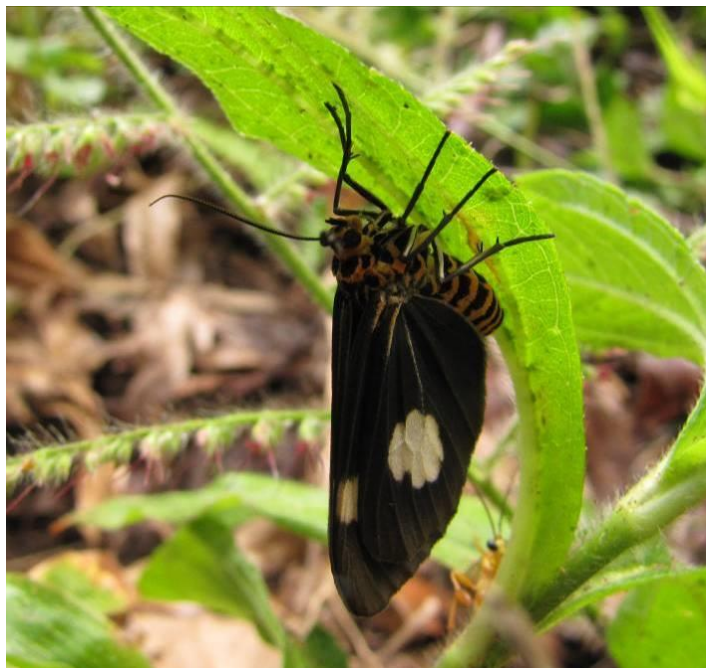
Arctiidae
Eressa geographica
Hourglass Wasp Moth



Arctiidae
Nyctemera secundiana
Magpie Moth

Wingspan:
Male 40mm Female 40mm

Caterpillar food plants:
Climbing Groundsel, Cape Ivy
Senecio angulatus/tamoides (Weed)
Fireweed
Senecio madagascariensis (Weed)



Moths of Mt Gravatt Conservation Reserve

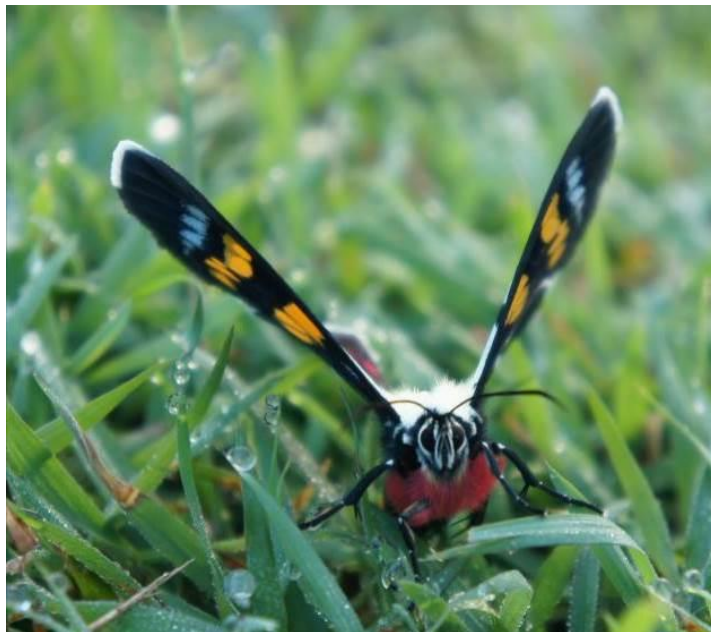
Agaristinae
Agarista agricola
Joseph's Coat Moth

Wingspan:
Male 50mm Female 70mm

Caterpillar food plants:
Slender Grape *Cayratia Clematidea*
Forest Grape *Cissus opaca*

Female Joseph's Coat Moth

Photos: Kerry Sinigaglia



Caterpillar on Forest Grape

Photo: Michael Fox



Moths of Mt Gravatt Conservation Reserve

Crambidae
Conogethes haemactalis
Yellow-red Pyralid Moth

Body length: 2 cm

Caterpillar food: Native grasses



Geometridae
Anisozyga metaspila
Gumtree Bizarre Lopper Moth I

Wingspan: 30mm

Male



Moths of Mt Gravatt Conservation Reserve

Geometridae
Comostola laesaria
Red-dotted Emerald Moth

Wingspan: 20mm



Geometridae
Crypsiphona ocultaria
Redlined Lopper Moth

Caterpillar food plants:
Eucalyptus



Moths of Mt Gravatt Conservation Reserve

Geometridae
Ectropis subinctaria
Bark Looper Moth

Upper side (left)
Underside (right)



Geometridae
Pingasa chlora
White Lopper Moth

Wingspan:
Male 40mm Female 40mm

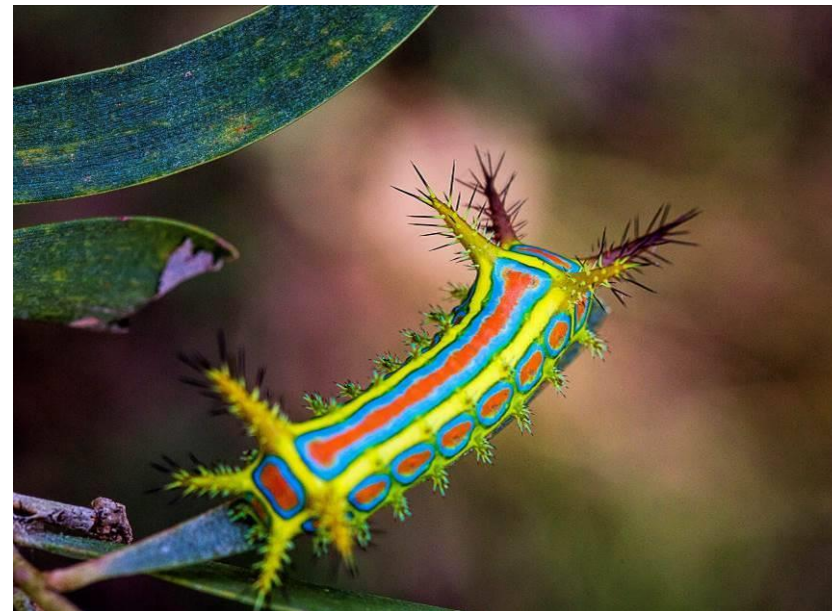
Caterpillar food plants:
Poison Peach *Trema tomentosa*



Moths of Mt Gravatt Conservation Reserve

Limacodidae
Calcarifera ordinate
Wattle Cup Moth

Caterpillar food plants:
Acacia sp.
Dogwood



Limacodidae
Doratifera quadriguttata
Four-Spotted Cup Moth

Caterpillar food plants:
Eucalyptus sp.
Brush Box *Lophostemon confertus*



Moths of Mt Gravatt Conservation Reserve

Lymantriidae
Orgyia australis
Painted Pine Moth, Painted
Acacia Moth

Wingspan:
Male 30mm/Female wingless

Caterpillar food plants:
Pigweed, Munyeroo, Purslane,
Acacia species



Moths of Mt Gravatt Conservation Reserve

Noctuidae
Achaea argilla

Caterpillar food plants:
Coffee Tree/Native Privet
Breynia oblongifolia
Pigweed, Munyeroo, Purslane
Portulaca oleracea



Noctuidae
Achaea janata
Croton Caterpillar

Feeds on invasive weed:
Castor Oil Plant
Ricinus communis (Weed)



Moths of Mt Gravatt Conservation Reserve

Noctuidae
Anomis flava
Cotton Looper Moth

Caterpillar food plants:
Native Rosella *Hibiscus heterophyllus*



Noctuidae
Callopistria maillardi
White Tangle

Wingspan (mm): 30mm
Caterpillar food plant:
Ferns



Moths of Mt Gravatt Conservation Reserve

Noctuidae
Calyptra minuticornis
Vampire Moth

Caterpillar food plant: *Stephania japonica*



Moths of Mt Gravatt Conservation Reserve

Noctuidae
Chrysodeixis argentifera
Tobacco Looper Moth

Caterpillar food plants:
Tomatoes, Beans, Sliver Beet and Bok
Choy

Video available



True legs (right) grow into the adult moth's legs.

Prolegs - left hand picture – true legs and head right hand end, prolegs to left. Prolegs are used for walking and clinging. Looper moths have limited number of developed prolegs so move in a looping fashion.



Moths of Mt Gravatt Conservation Reserve

Noctuidae
Cosmodes elegans
Green Blotched Moth



Noctuidae
Donuca Castalia
Brown White Banded Noctuid



Moths of Mt Gravatt Conservation Reserve

Noctuidae
Donuca orbigera
Tooth White Banded Noctuid



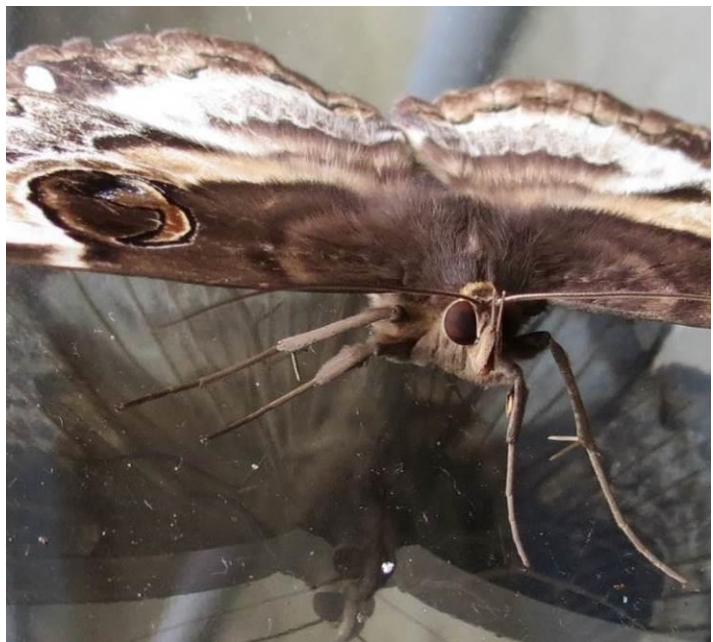
Noctuidae
Donuca rubropicta
White Banded Noctuid Moth I



Moths of Mt Gravatt Conservation Reserve

Noctuidae
Erebus terminitincta
Erebus Moth

Caterpillar food plant:
Barbedwire Vine



Moths of Mt Gravatt Conservation Reserve

Noctuidae
Eudocima fullonia
Fruit Piercing Moth

Caterpillar food plant:
Tape Vine *Stephania japonica*

Alien from Indo-Malaysian region –
feeds on fruit



Noctuidae
Grammodes justa
Rectangular-striped Noctuid
Moth



Moths of Mt Gravatt Conservation Reserve

Noctuidae
Hecatesia fenestrata
Whistling Moth

Wingspan (mm): 25M/30F

Caterpillar food plant:
Dodder Laurel (left hand photo)

Males use whistling sound created by wings to attract females.



Noctuidae
Spodoptera picta
Lily Caterpillar Moth

Size: 20mm

Caterpillar food: *Crinum pedunculatum*
(native), *Hymenocallis littoralis*
(garden plant)



Moths of Mt Gravatt Conservation Reserve

Noctuidae
Speiredonia spectans
Granny's Cloak Moth

Wingspan: 70mm

Caterpillar food plants:
Acacia sp.



Noctuidae
Xanthodes transversa
Transverse Moth

Wingspan: 30mm

Caterpillar food plants:



Moths of Mt Gravatt Conservation Reserve

Notodontidae

Epicoma protrahens

Yellow Spot Epicoma Moth

Similar to *Epicoma tristis* – white ring with yellow spot. Broken yellow line with cream dots along edge of wing.



Notodontidae

Epicoma tristis

Brown Ring Epicoma Moth

Similar to *Epicoma protrahens* - dark ring with yellow spot, yellow and cream dots along wing edge.



Moths of Mt Gravatt Conservation Reserve

Larval food plants: *Eucalyptus*

Notodontidae
Neola semiaurata
Wattle Notodontid Moth

Caterpillar food plants:
Acacia sp.



Moths of Mt Gravatt Conservation Reserve

Notodontidae
Trichiocercus sparshalli
Sparshalli Moths

Size: 40mm

Catterpillar food: *Corymbia*,
Eucalyptus, *Lophostemon* sp.



Moths of Mt Gravatt Conservation Reserve

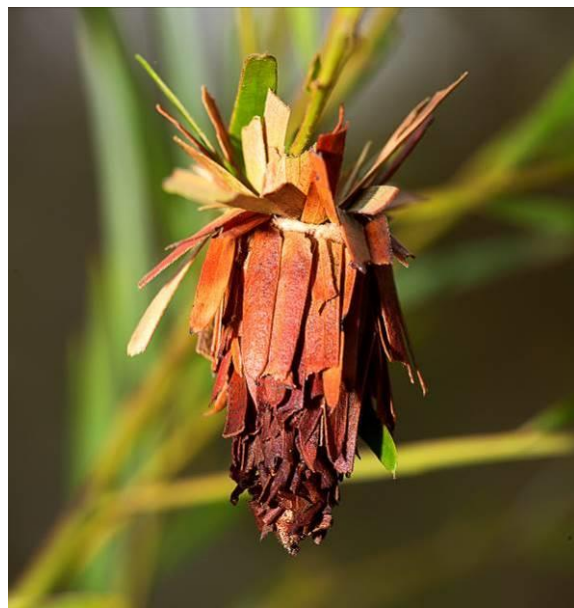
Psychidae
Clania lewinii
Stick Case Moth



Psychidae
Hylarcta huebneri
Common Leaf Case Moth

May use Acacia, Eucalypt or other leaves.

Video of Case Moth caterpillar



Moths of Mt Gravatt Conservation Reserve

Psychidae
Hyalarcta nigrescens
Ribbed Case Moth

Case made with silk only.
Female adult never leaves case.
Male black with transparent wings.



Psychidae
Metura elongatus
Saunders' Case Moth



Moths of Mt Gravatt Conservation Reserve

Sphingidae
Agrius convolvuli
Convolvulus Hawk Moth

Caterpillar food plants:
Mile-a-Minute, Blue Morning Glory



Moths of Mt Gravatt Conservation Reserve

Sphingidae
Coequosa australasiae
Hawk Moth

Wingspan: 120mm

Caterpillar food plants:
Eucalyptus sp.



Moths of Mt Gravatt Conservation Reserve

Sphingidae
Eupanacra splendens
Hawk Moth

Caterpillar food plants:
Peace Lily *Spathiphyllum sp.* exotic



Moths of Mt Gravatt Conservation Reserve

Sphingidae
Hippotion Celerio
Vine Hawk Moth



Moths of Mt Gravatt Conservation Reserve

Sphingidae
Theretra latreilli
Pale Brown Hawk Moth

Caterpillar food plants:
Slender Grape *Cayratia clematidea*

Caterpillars have two colour forms
green and brown.



Moths of Mt Gravatt Conservation Reserve

Sphingidae
Theretra oldenlandiae
Impatiens Hawk Moth

Caterpillar food plants:
Slender Grape *Cayratia clematidea*

Fully grown caterpillar – yellow dots at front and horn at rear.

Young caterpillar on Slender Grape leaves.



Xyloryctidae
Cryptophasa balteata
Gum Tree Borer Moth

Caterpillar food plants:
Eucalyptus species

Size:20mm



Moths of Mt Gravatt Conservation Reserve

Zygaenidae
Pollaninus viridipulverulenta
Satin-Green Forester Moth

Size: 10mm

Caterpillar food plants:
Erect Guinea-flower (*Hibbertia stricta*)
Hibbertia aspera

