

Insects, beetles, bugs and slugs of Mt Gravatt Conservation Reserve

Compiled by: Michael Fox
www.megoutlook.org/flora-fauna/
© 2015-21 Creative Commons – free use with attribution to Mt Gravatt Environment Group

Ants		
<p>Dolichoderinae <i>Iridomyrmex</i> sp. Small Meat Ant</p> <p>Attendant “Kropotkin” ants with caterpillar of Imperial Hairstreak butterfly. Ants provide protection in return for sugary fluids secreted by the caterpillar. Note the strong jaws. These ants don’t sting but can give a powerful bite.</p> <p>Kropotkin is a reference to Russian biologist Peter Kropotkin who proposed a concept of evolution based on “mutual aid” helping species from ants to higher mammals survive.</p>		

Insects, beetles, bugs and slugs of Mt Gravatt Conservation Reserve

Formicinae
Opisthopsis rufithorax
Black-headed Strobe Ant



Formicinae
Camponotus consobrinus
Banded Sugar Ant

Size 10mm

Eggs in rotting log



Insects, beetles, bugs and slugs of Mt Gravatt Conservation Reserve

Formicinae
Camponotus nigriceps
Black-headed Sugar Ant



Formicinae
Polyrhachis ammon
Golden-tailed Spiny Ant



Large spines at rear of thorax



Nest



Formicinae

Polyrhachis australis

Rattle Ant

Black Weaver Ant or

Dome-backed Spiny Ant

Feeding on sugar secretions produced by Redgum Lerp Psyllid. White lerps are protective shelters made of sugar and wax secretions and waste produced by psyllid.

Pardalotes feed on lerps using short thick beaks to lever them from eucalypt leaves.



Ponerinae

Rhytidoponera metallica

Green-headed Ant



Insects, beetles, bugs and slugs of Mt Gravatt Conservation Reserve

Beetles

Cantharidae
Yellow Soldier Beetle

Mating



Cantharidae
Chauliognathus tricolor
Tricolor Soldier Beetle



Insects, beetles, bugs and slugs of Mt Gravatt Conservation Reserve

Cerambycidae
Aridaeus thoracicus
Flower Longicorn Beetle



Insects, beetles, bugs and slugs of Mt Gravatt Conservation Reserve

Chrysomelidae
Aproida balyi
Two-tailed Leaf Beetle

Photo (left): Leah Holloway
2016 Photography Workshop

Caterpillar food plant:
Wombat Berry



Eggs (left)
Caterpillar (right)



Insects, beetles, bugs and slugs of Mt Gravatt Conservation Reserve

Chrysomelidae
Calomela pallida
Green Strip Leaf Beetle



Chrysomelidae
Cassida compuncta
Green Tortoise Beetle

Food: *Ipomoea plebeia*



Insects, beetles, bugs and slugs of Mt Gravatt Conservation Reserve

Chrysomelidae
Dicranosterna immaculata
Acacia Leaf Beetle



Chrysomelidae
Dicranosterna picea
Acacia Leaf Beetle



Insects, beetles, bugs and slugs of Mt Gravatt Conservation Reserve

Chrysomelidae
Lilioceris bakewelli
Red Narrow-necked Leaf
Beetle

Food plant: [Smilax australis](#)



Chrysomelidae
Oides dorsosignata
Orange Oides Leaf Beetle



Chrysomelidae
Oides laetabilis
Blue Oides Leaf Beetle



Insects, beetles, bugs and slugs of Mt Gravatt Conservation Reserve

Chrysomelidae
Paropsis maculata
Spotted Paropsine Beetle

Food plant:
Eucalyptus leaves



Insects, beetles, bugs and slugs of Mt Gravatt Conservation Reserve

Chrysomelidae
Paropsisterna cloelia
Eucalyptus Variegated
Beetle

Food plant:
Eucalyptus leaves



Food for:
Spined Predatory Shield Bug



Insects, beetles, bugs and slugs of Mt Gravatt Conservation Reserve

Chrysomelidae
Phyllocharis cyanicornis
9-Spotted Leaf Beetle

Food plant:
Lolly Bush (*Clerodendrum
floribundum*)



Coccinellidae
Coccinella repanda
Ladybird

Adults and larvae predators of
aphids



Insects, beetles, bugs and slugs of Mt Gravatt Conservation Reserve

Coccinellidae
Coelophora inaequalis
Variable Ladybird Beetle

Adults and larvae predators of aphids



Insects, beetles, bugs and slugs of Mt Gravatt Conservation Reserve

Coccinellidae
Coccinella transversalis
Transverse Ladybird Beetle



Coccinellidae
Epilachna vigintisexpunctata
26-spotted Potato Ladybird



Coccinellidae
Harmonia conformis
Common Spotted Ladybird



Larva (left)

Pupa (right)



Insects, beetles, bugs and slugs of Mt Gravatt Conservation Reserve

Coccinellidae
Illeis galbula
Fungus-eating Ladybird
Beetle



Meloidae
Zonitis sp.
Orange Blister Beetle

Size: 16mm



Insects, beetles, bugs and slugs of Mt Gravatt Conservation Reserve

Lycidae
Metriorrhynchus rhipidius
Long-nosed Lycid Beetle



Passalidae
Mastachilus sp.
Black Bess Beetle

Size: 40mm



Insects, beetles, bugs and slugs of Mt Gravatt Conservation Reserve

Rhipiphoridae
Pelectomoides sp.
Wedge-shaped Beetle



Insects, beetles, bugs and slugs of Mt Gravatt Conservation Reserve

Scarabaeidae
Cockchafer
Curl-grub, C-grub, Scarab
beetle larvae



Scarabaeidae
Eupoecila australasiae
Fiddle Beetle

Feeds on eucalypt nectar
Food for Pied Butcher Bird



Insects, beetles, bugs and slugs of Mt Gravatt Conservation Reserve

Lampyridae
Luciola nigra
Firel



Firefly at night



Bugs

Alydidae
Leptocoris acuta
Paddy Bug (Rice Bug)

Size: 15mm

Food: Grass seed, rice



Insects, beetles, bugs and slugs of Mt Gravatt Conservation Reserve

Coreidae
Amorbus alternatus
Eucalyptus Tip-wilter Bug I

Feed on Eucalypts by sucking sap.



Coreidae
Mictis profana
Crusader Bug

Meal for [White Crab Spider](#)



Insects, beetles, bugs and slugs of Mt Gravatt Conservation Reserve

Margarodidae
Monophlebulus sp.
Snow Ball Mealy Bug



Pentatomidae
Alcaeus varicornis
Acacia Shield Bug

Nymph

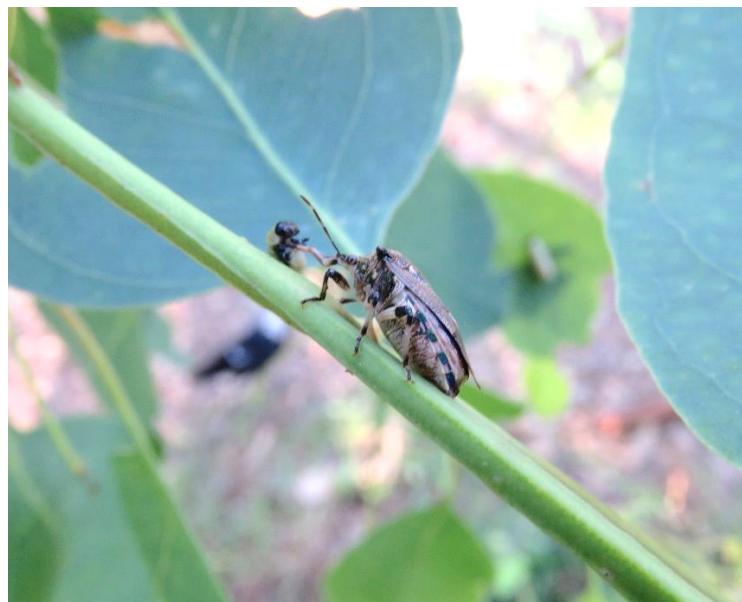


Insects, beetles, bugs and slugs of Mt Gravatt Conservation Reserve

Pentatomidae
Oechalia schellenbergii
Spined Predatory Shield Bug

Size: 15mm

Food: Eucalyptus Variegated
Beetle



Pentatomidae
Poecilometis patruelis
Common Gum Tree Shield
Bug

Laying eggs

Also known as Stink Bugs
because of foul smelling defensive
liquids.

Feed on Eucalypts by sucking sap.



Insects, beetles, bugs and slugs of Mt Gravatt Conservation Reserve

Eggs hatched.
(right) close up of egg capsules



Pyrrhocoridae
Dindymus versicolor
Harlequin Bug



Insects, beetles, bugs and slugs of Mt Gravatt Conservation Reserve

Scutelleridae
Lampromicra senator
Green Jewel Bug

Food plants:
Coffee Tree/Native Privet *Breynia oblongifolia*
Many plants including ferns, figs and Lantana



Insects, beetles, bugs and slugs of Mt Gravatt Conservation Reserve



Scutelleridae
Tectocoris diophthalmus
Cotton Harlequin Bugs

Nymph



Tessaratomidae
Musgraveia sulciventris
Bronze Orange Bug
Stink Bug

Feed on citrus trees by sucking sap.

Mating (right)



Insects, beetles, bugs and slugs of Mt Gravatt Conservation Reserve

Holes along abdomen are spiracle used for breathing.

Hole circled (right) releases stinky liquid.



Reduviidae
Pristhesancus plagipennis
Common Assassin Bug

Feeds on insects, spiders and grasshoppers. Uses powerful curved proboscis to pierce prey's body and suck their juices.

Third/Fourth Instar



Cicadas

Cicadidae
Aleeta curvicosta
Floury Baker

Feed on tree sap.

Food species for Grey Fantails,
Noisy Minors, Pied & Grey
Butcherbirds, Torresian Crows and
Tawny Frogmouths



Insects, beetles, bugs and slugs of Mt Gravatt Conservation Reserve

Cicadidae
Birrima varians
Black Tree-ticker

Changing shell

(left) wings drying
(right) wings dry



Cicadidae
Chlorocysta vitripennis
Small Bottle Cicada

Male 20-25mm
Female 15-18mm

Wing veins green

Found by: Mao Kawachi



Insects, beetles, bugs and slugs of Mt Gravatt Conservation Reserve

Cicadidae
Pauropsalta corticinus
Bark Squeaker

Size: 20mm



Insects, beetles, bugs and slugs of Mt Gravatt Conservation Reserve

Cockroaches

Blaberidae
Ellipsidion austral
The Beautiful Cockroach

Body length 18mm



Blaberidae
Ellipsidion sp.
See-through Ellipsidion



Insects, beetles, bugs and slugs of Mt Gravatt Conservation Reserve

Blaberidae
Panesthia australis
Australian Wood Cockroach

No wings burrows in leaf litter in forest.



Blaberidae
Platyzosteria
(Melanozosteria) kellyi
Oval Woodland Cockroach




Insects, beetles, bugs and slugs of Mt Gravatt Conservation Reserve

Blattodea
Laxta jeanneae
Trilobite Cockroach

Female



Insects, beetles, bugs and slugs of Mt Gravatt Conservation Reserve

<p>Centipedes/Millipedes</p>		
<p>Cryptopidae <i>Cryptops spinipes</i> Centipede</p>		
<p>Myriapoda Diplopoda Millipede</p> <p>Herbivores and scavengers mainly surviving on rotting vegetable or animal matter.</p>		

<p>Mantid</p>	
<p>Mantidae <i>Ciulfina sp.</i> Tree-running Mantid Size 25mm</p>	
<p>Mantidae <i>Archimantis latistyla</i> Large Brown Mantid Size 12cm</p>	

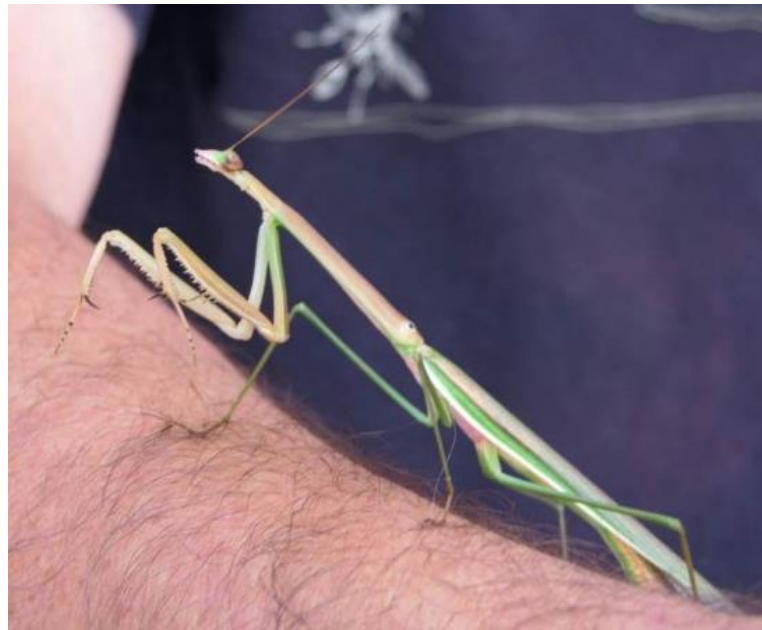
Insects, beetles, bugs and slugs of Mt Gravatt Conservation Reserve

Mantidae
Orthodera ministralis
Garden Mantis

Late instar



Mantidae
Tenodera australasiae
Purplewinged Mantid



<p>Stick Insects - Phasma</p>		
<p>Phasmatidae <i>Acrophylla titan</i> Titan Stick Insect</p>	 A Titan Stick Insect is shown from a dorsal perspective, clinging to a light-colored, textured wall. The insect's body is extremely thin and elongated, resembling a twig. Its legs are long and thin, extending outwards. The head is small and positioned at the top of the body.	 A Titan Stick Insect is shown from a side profile, perched on a white window blind. The insect's body is thin and segmented, with a mottled pattern. Its long, thin legs are spread out, and its antennae are visible at the top of its head.

Phasmatidae
Didymuria violescens
Spur-legged Stick Insect

Feeds on leaves of eucalypt trees

[Video available](#)



Phasmatidae
Eurycnema goliath
Goliath Stick Insect

[Video available](#)

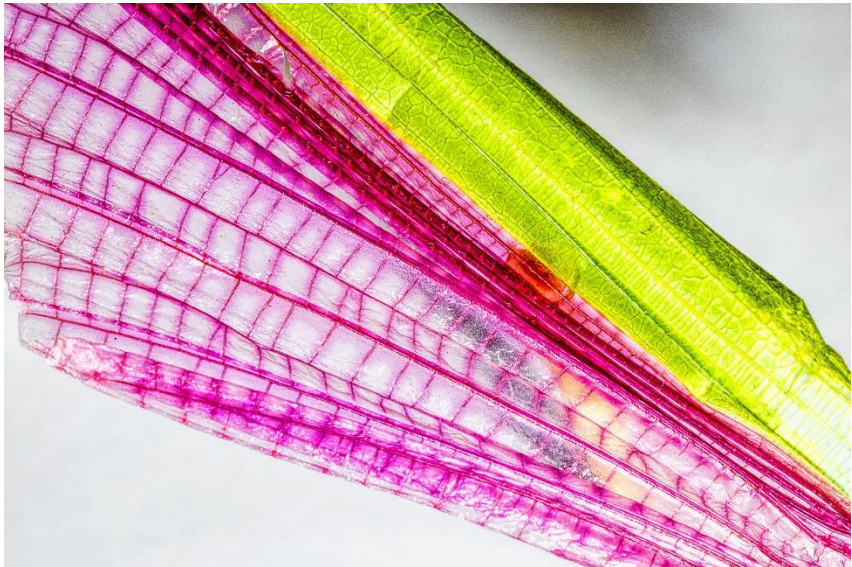
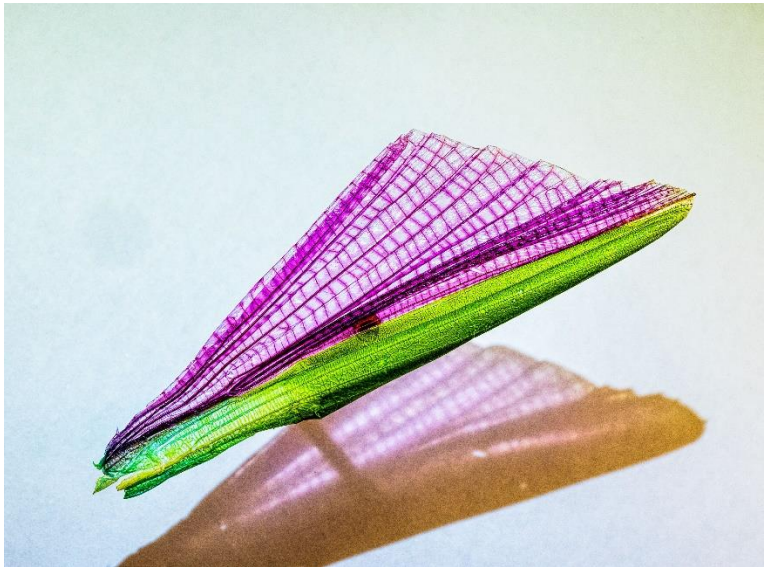


Insects, beetles, bugs and slugs of Mt Gravatt Conservation Reserve

Phasmatidae
Podacanthus typhon
Pink-winged Phasma

20mm


Food: Eucalypt trees



Phasmatidae
Tropidoderus children
Children's Stick Insect



Insects, beetles, bugs and slugs of Mt Gravatt Conservation Reserve

Dragonflies	
<p>Aeshnidae <i>Hemianax papuensis</i> Australian Emperor</p> <p>Food: Other invertebrates</p>	

Insects, beetles, bugs and slugs of Mt Gravatt Conservation Reserve

Libellulidae
Diplacodes bipunctata
Wanderer Percher

Food: Other invertebrates

Immature male



Libellulidae
Orthetrum caledonicum
Blue Skimmer Dragonfly

Food: Other invertebrates



Insects, beetles, bugs and slugs of Mt Gravatt Conservation Reserve

Grasshoppers/Katydids	
<p>Acrididae <i>Adreppus fallax</i> Common Adreppus, Stem Grasshopper</p> <p>Hides by mimicking tree bark</p>	
<p>Acrididae <i>Goniaea opomaloides</i> Mimetic Gumleaf Grasshopper</p>	

Insects, beetles, bugs and slugs of Mt Gravatt Conservation Reserve

Acrididae
Phaulacridium vittatum
Wingless Grasshopper



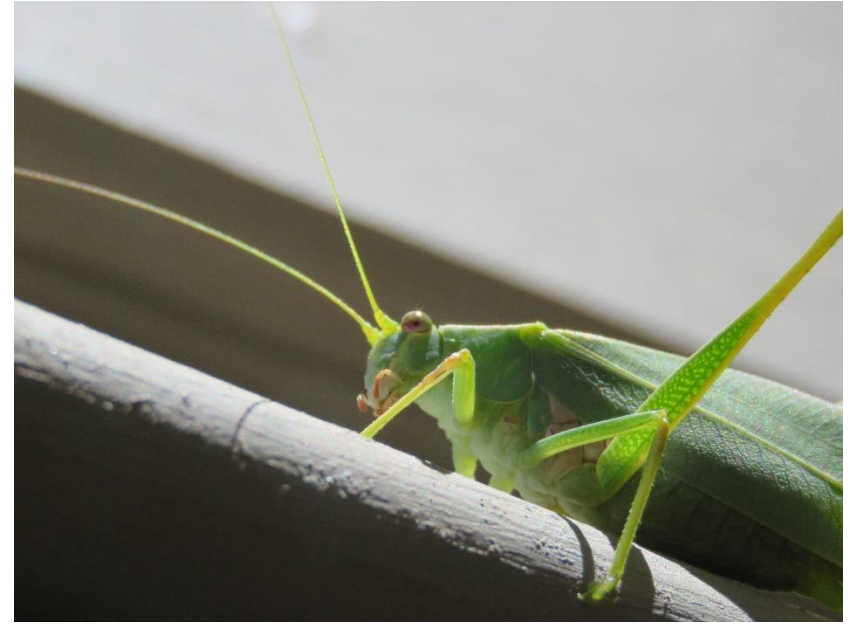
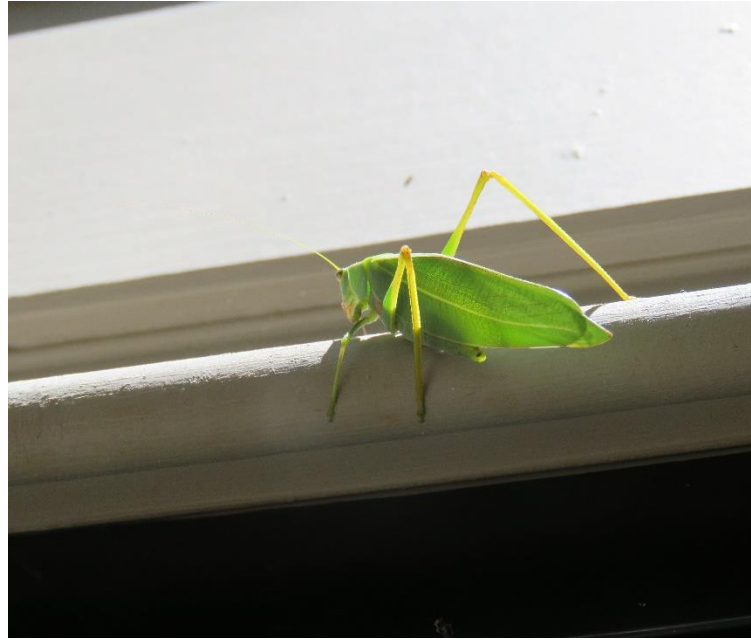
Acrididae
Valanga irregularis
Giant Grasshopper



Insects, beetles, bugs and slugs of Mt Gravatt Conservation Reserve

Tettigoniidae
Caedicia sp.
Brisbane Garden Katydid

Size: Male 40mm



Tettigoniidae
*Ephippitytha
trigintiduoguttata*
Spotted Katydid

Food: Eucalypt leaves



Nymph



Crickets

Gryllacrididae
Xiphogryllacris orthoxipha
Three-eyed Leaf-rolling
Cricket



Lacewings

Insects, beetles, bugs and slugs of Mt Gravatt Conservation Reserve

Chrysopidae
Oligochrysa lutea
Green Lacewings

Citrus Mealybug predator

Note transparent wings and long thread-like antennae.



Myrmeleontidae
Callistoleon erythrocephalus
Orange Antlion

(right) Antlion trap



Nymphidae
Nymphes myrmeleonides
Blue Eyes Lacewing, Giant
Orange Lacewing



Larvae just hatched from white
eggs on stalks.

Nymphes myrmeleonides eggs are
laid in a U shape with each egg on
a thin stalk.

Larvae are litter dwellers and
predators of other small insects.



Osmylidae
Porismus strigatus
Pied Lacewing



Insects, beetles, bugs and slugs of Mt Gravatt Conservation Reserve

Eurybrachyidae
Chewobrachys sanguiflua
Wattle Hopper



Eurybrachyidae
Platybrachys decemmacula
Green Face Gum Hopper

Female (Green face)
Size F25mm



Insects, beetles, bugs and slugs of Mt Gravatt Conservation Reserve

Flatidae
Colgar sp.
Pink Planthopper



Wasps

Ichneumonidae
Anacis sp.
Black and White Ichneumon
Wasp

Size: 15mm

Garden Pest Controller
Parasites moth caterpillars



Ichneumonidae
Echthromorpha agrestoria
Yellow-banded Ichneumon
Wasp

Size: Female 22mm

Garden Pest Controller
Parasites moth caterpillars

Photo: Alan Moore

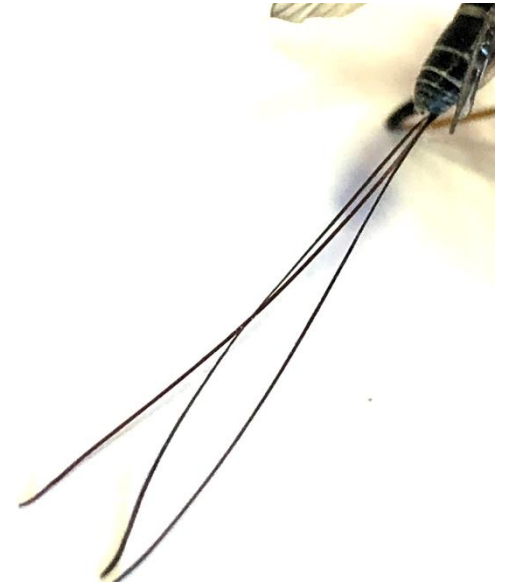


Ichneumonidae
Gotra sp.
Banded Pupa Parasite Wasp

Size: 15mm

Garden Pest Controller
Parasites moth caterpillars

Long ovipositor used to lay eggs
on caterpillars. Dual sheath
protects ovipositor.
(Latin ovi = egg, posit = placed)



Insects, beetles, bugs and slugs of Mt Gravatt Conservation Reserve

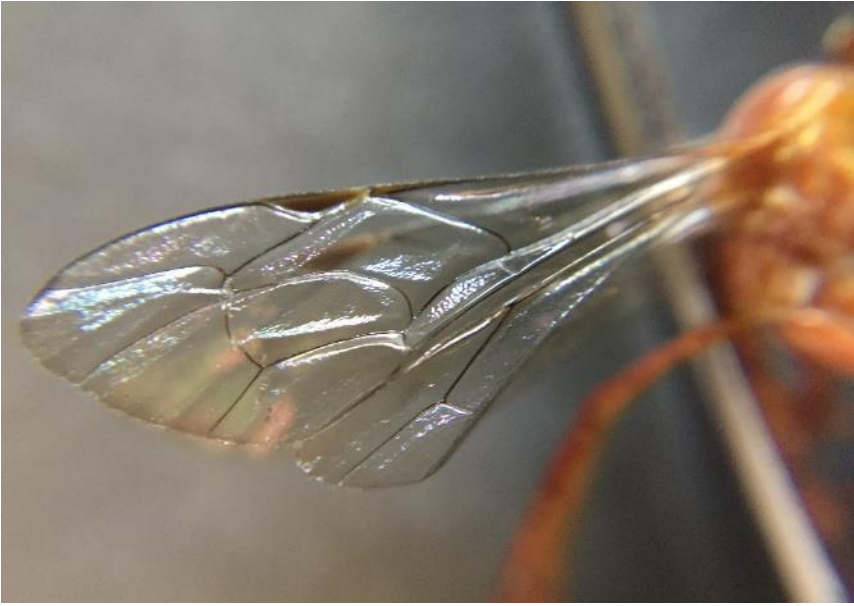
Ichneumonidae
Metopius sp.
Tiger Ichneumon Wasp



Insects, beetles, bugs and slugs of Mt Gravatt Conservation Reserve

Ichneumonidae
Netelia producta
Orange Caterpillar Parasite
Wasp

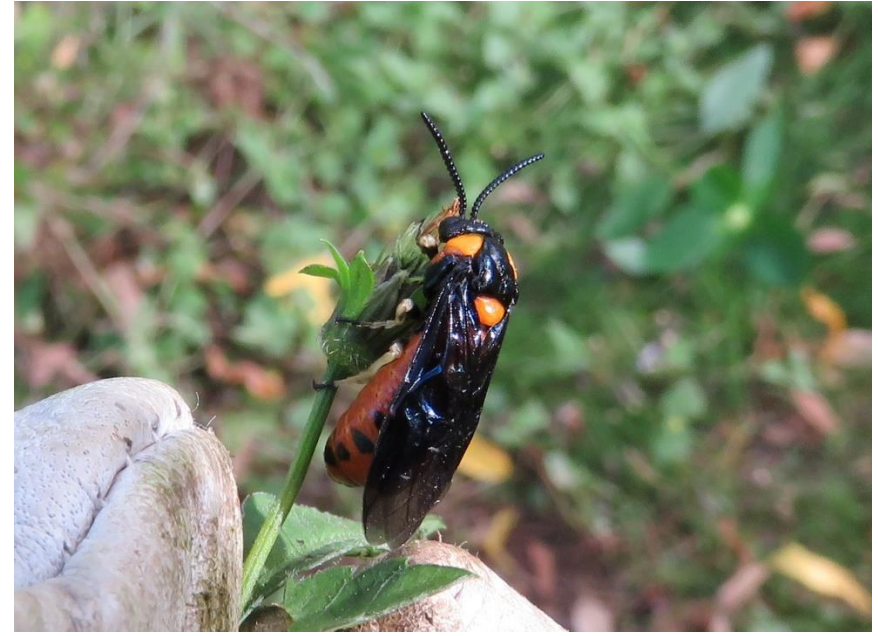
Garden Pest Controller
Parasites moth caterpillars



Insects, beetles, bugs and slugs of Mt Gravatt Conservation Reserve

Pergidae
Lophyrotoma zonalis
Paperbark Sawfly

Larvae food: Paperbark
(*Melaleuca*)



Pergidae
Perga affinis
Spitfire Sawfly

Larvae food: Eucalyptus



Pompilidae
Priocnemis bicolor
Orange Spider Wasp

Female Spider Wasp has paralysed a Huntsman spider approximately twice its size and is dragging it over one metre to the nest hole it has prepared.

Note the debris around the hole.

Once the spider has been dragged down into the nest hole the spider lays her eggs in its body which is then food for the larva.

Nest complete the wasp neatly fills in the hole clearing the debris at the same time and leaving the site spotless.



Vespidae
Abispa splendida
Large Mud-nest Wasp

Size: 25mm



Vespidae
Polistes variabilis
Common Large or Australian Paper Wasp

Not aggressive but will sting if nest is disturbed.
Nest is a wide cone shape hanging from a single stork.
Nest "paper" is chewed plant material like decayed timber mixed with saliva.
Adult Paper Wasps feed on nectar and pollen. Collect caterpillars to feed larvae.
Water is collected from places with wasp can land safely eg. lily pond or Puddling Place.

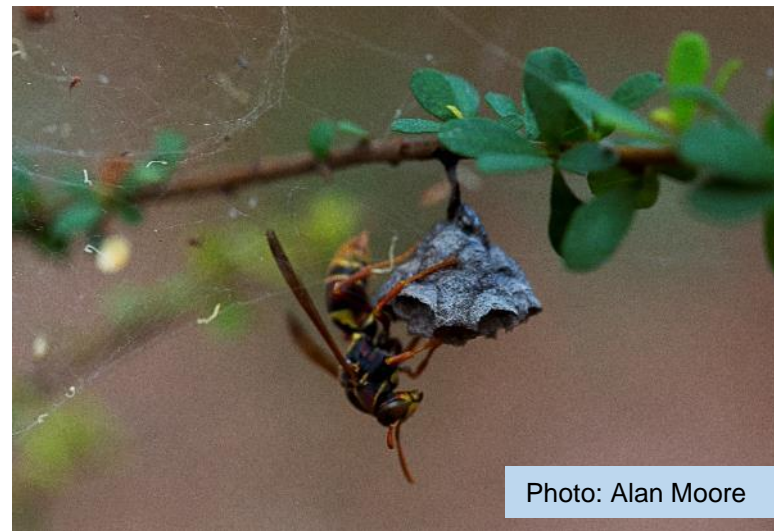


Photo: Alan Moore

Vespidae
Ropalidia revolutionalis
Small Brown Paper Wasp

Not aggressive but will sting if nest is disturbed.



Vespidae
Ropalidia romandi
Yellow Paper Wasp

Smallest wasp, biggest nest?
Yellow Paper Wasps build their nest under a tree branch: Spotted Gum *Corymbia citriodora* in photo.

Yellow Paper Wasps are only 6-8mm but they make the biggest nests of any paper wasp: up to one metre long with multiple combs inside the outer paper covering.



Insects, beetles, bugs and slugs of Mt Gravatt Conservation Reserve

Flies

Asilidae
Asilinae
Golden Brown Robber Fly



Bombyliidae
Anthrax confluensis
Anthrax Bee Fly

Matt black wings
Male – white tip on tail (left)



Insects, beetles, bugs and slugs of Mt Gravatt Conservation Reserve

Bombyliidae
Ligyra satyrus
Common Ligyra Bee Fly

Size 25mm



Calliphoridae
Amenia leonina
Blue Snail Parasitic Blowfly

Food: Parasites land snails

Male frons extremely narrow



Insects, beetles, bugs and slugs of Mt Gravatt Conservation Reserve

Dolichopodidae
Austrosciapus connexus
Green Long Legged Fly

Size: M 5mm

Food: Small soft bodied insects



Muscidae
Dichaetomyia norrisi
Slender Orange Bush Fly

Size: Female 8mm



Insects, beetles, bugs and slugs of Mt Gravatt Conservation Reserve

Sepsidae
Parapalaeosepsis plebeian
Ant Fly

Body length 5mm

Look for wing spots.



Stratiomyidae
Hermetia illucens
Black Soldier Fly

Size: M 5mm

Larvae: Feed on organic waste
plant and animal

Photos: A Moore



Insects, beetles, bugs and slugs of Mt Gravatt Conservation Reserve

Tachinidae
Rutilia sp.
Tachinid Fly, Large Green
Parasitic Fly

Larvae parasite Scarab Beetle
larvae.



Tipulidae
Tipula sp.
Orange Crane Fly

http://aggie-horticulture.tamu.edu/galveston/beneficials/beneficial-29_crane_flies.htm



Insects, beetles, bugs and slugs of Mt Gravatt Conservation Reserve



Snails/Slugs

Athoracophoridae
Triboniophorus graeffei
Red Triangle Slug

Largest native land slug.

Feeds at night on microscopic algae growing on the surface of smooth-barked eucalypt trees. Leaves a line of small circular tracks. Can be used to clean bathroom mould.



Breathing pore in bottom corner of red triangle.

(left) Pore open

(right) Pore closed



Insects, beetles, bugs and slugs of Mt Gravatt Conservation Reserve

Camaenidae
Bradybaena similaris
Asian Tramp Snail

Introduced to Australia



Camaenidae
Sphaerospira fraseri
Fraser's Land Snail

Shell diameter 50mm
Thickened lip



Insects, beetles, bugs and slugs of Mt Gravatt Conservation Reserve

Helicarionidae
Fastosarion virens
Fine-speckled Semi-slug



Weevil

Belidae
Rhinotia brunnea
Brown Belid Weevil

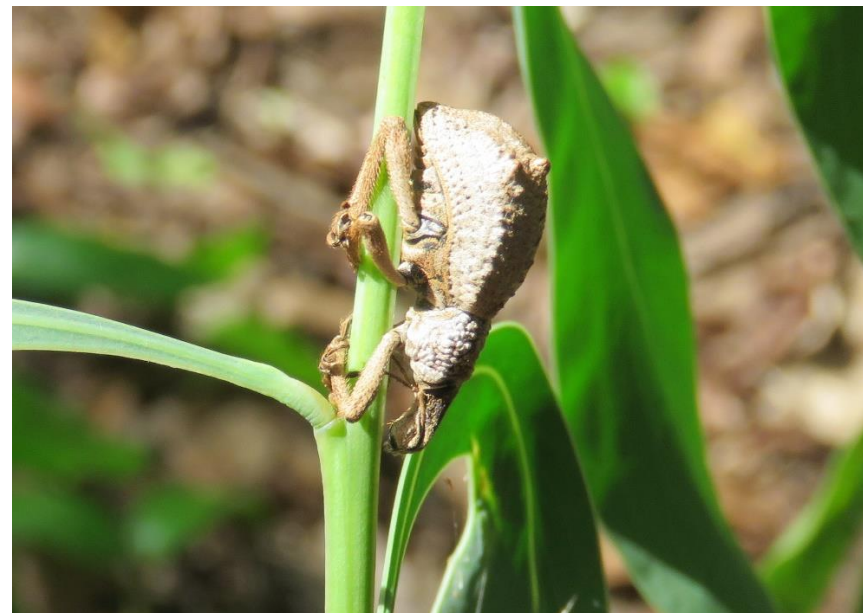


Insects, beetles, bugs and slugs of Mt Gravatt Conservation Reserve

Curculionidae
Leptopius maleficus or
Leptopius nodicollis
Wattle Pig Weevil

Size: 20mm

Food: Acacia species



Mosquito

Culicidae
Toxorhynchites speciosus
Predatory / Giant Mosquito

Size: 12-16mm

Food:
Adults feed on nectar.
Larva feed on other mosquito larva



Mites

Acarina
Trombididae
Red Velvet Mite

